

Love KC '22





A Tree or a Forest?

Which do we aspire to be? Which do you aspire to be?

As we crossed the five-year mark at Love KC, we took a turn along the way; let me explain.

In the early days, we operated out of the conviction to make the everyday follower of Jesus the hero in their story. We want individuals to live on mission where they live, learn, work, and play. We equip you to live your faith with compelling confidence and know what to say to reach your friends for Jesus. Simply put, we want to create disciples who make disciples.

I now call this the micro view of what we want to do in KC.

God blessed the effort. Now there are 3,553 Lights in KC who've adopted their neighborhood or workplace to pray, care, share, and make disciples. Of course, we don't take credit for that number; many ministries encourage the use of lovekc.net/blesseveryhome. However, it is significant that the number in KC is nearly double that of any other city in the U.S. Well done, Kansas City.

I see that effort as a tree. Stay with me. It's not bad to be a tree, just limited.

Three years into the work of leading a citywide discipleship effort, God widened our perspective to think about what it would require to fulfill a common prayer we pray:

We pray that every person in KC would have repeated opportunities to hear the Good News of Jesus from a friend. So that when they accept Jesus, they have a community to surround them and a friend to disciple them.

This EVERY Person Plan requires a forest. I call it the macro view because it sees the city as a whole.

In a forest, the root system of trees becomes intertwined. We've now learned that trees communicate and share resources through their roots. They rally to the need of a tree with less than desirable conditions. And when some prosper, they share—the forest functions as an interconnected ecosystem. If one tree is in danger, it affects all, and when they work according to God's design, they thrive as a community.

God cares about every person in Kansas City. Should we? He has a plan to reach every person in KC. Do we?

I'm convinced that we won't reach everyone if we don't have a plan.

Most ministries think more like a tree than a forest. We did initially. Our human limitations and desire for comfort get in the way.

We must think and act differently to function as the big C church with a kingdom-first view. So let's join Jesus in prioritizing the kingdom of heaven over our individual churches or ministries. God sees one church, one body, in Kansas City.

We launched the EVERY Person Plan (see everykc.org) two years ago with the desire to collaborate in the five regions of KC. In this macro view, we find anchor churches and pastors, then connect them to mission mobilizers in their region. Then we, as Love KC, undergird them as a backbone organization to assist them in doing what they already want to do. We trust the member churches and mission orgs to fulfill the Great Commission and the Great Commandment in word and deed.

We don't require the region to fly our Love KC flag, nor do we control the pace of the work. It is a bottom-up, decentralized support system. The goal is to enable a dense network that self-sustains.

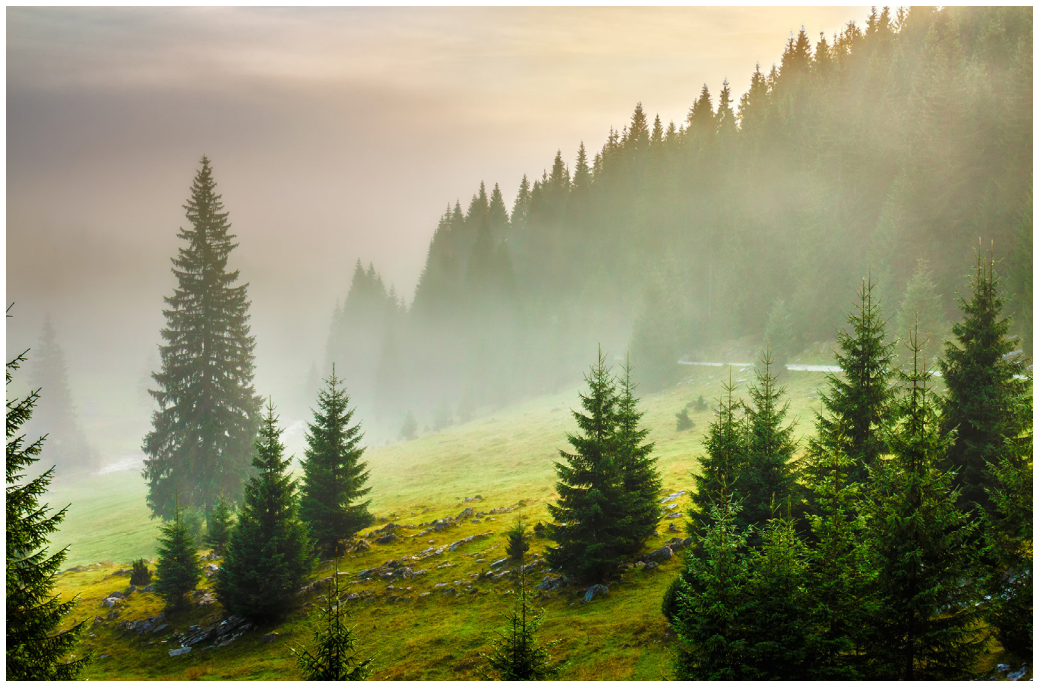
We provide vision, tools, communication, infrastructure, data collection, and a database so they can do what they do best, be the big C church. They already want to meet and practice John 17, to be in unity, pray, and collaborate. We support the enablement of the vision and offer an operating system that builds on the five finish lines of the Great Commission. More on that to come.

Please join in as we learn to operate more like a forest. It's the only way to reach every person in KC.

In the pages to come, you will see this familiar theme which I will refer to as the micro and the macro view. I give insight into what we do in the micro so any individual interested can find a place to begin and grow. On the next page, we discuss the macro view of how the same principals work with the EVERY Person plan.

I won't return to the forest illustration for this annual report, but I hope you never forget it. There is no better way to create a kingdom- come flourishing in Kansas City.

Only together,





prayer

North Kansas Cit



Prayer in the micro

Our Love KC mission: Live your faith with compelling confidence and know how to lead your friends to Jesus.

Live your faith

Adopt your neighborhood, or workplace, to pray, care, share, and disciple. We call this living on mission. It starts with loving God and loving your neighbor, these are the two great commandments.

Know how to lead your friends to Jesus

Begin with prayer, it is a natural response to loving God and the first step to loving your neighbor. Prayer is a two way dialog. When we both speak and listen God guides us into His will. He opens doors for us to share our faith with neighbors, friends, and relatives—your sphere of influence.

Sign up at lovekc.net/blesseveryhome and get five neighbor names for which to pray every day. Follow the prompts and you literally pray your way around your neighborhood. Use the “List” feature and add others in your circle to complete your prayer list. We call this lifestyle, “living as a Light”.

Hello Tim,
may the Lord help you bless every home.

Suggested prayer

Father, I praise and thank You for showing us Your grace, bringing salvation for all people, training us to renounce ungodliness and worldly passions, and live self-controlled, upright and godly lives. Save our neighbors to know this new life in Christ.

Titus 2:11-12

Here are the homes to pray for today. [Show on map.](#)

-  **ROBERT MCKEE**
2005 E MAPLE ST
-  **TREVOR JONES**
2009 E MAPLE ST
-  **JACK AND DIANNE SMITH**
1952 ELM CT
-  **GREG AND DOROTHY ROBERTS**
1956 ELM CT
-  **SARAH JOHNSON**
2017 BRIDGES LN

When done click:

PRAYED

Weekly prayerwalk your neighborhood and include your local grade school. Pray for protection for the children, strength, and courage for the teachers and administrators. As you walk ask God to guide you in how to pray and care.

“Since school started I’ve been prayer walking around the grade school where my grand daughters attend. I pray for them, their teachers, the administrators, and the school in general. Sometimes I walk with neighbors. I believe God honors the prayers and I feel healthier too.”
-Belinda Kendall

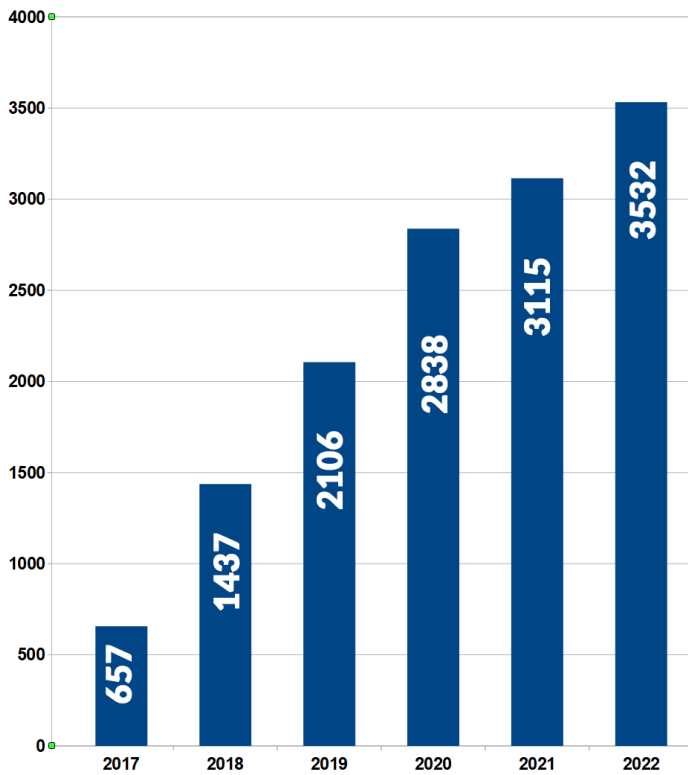
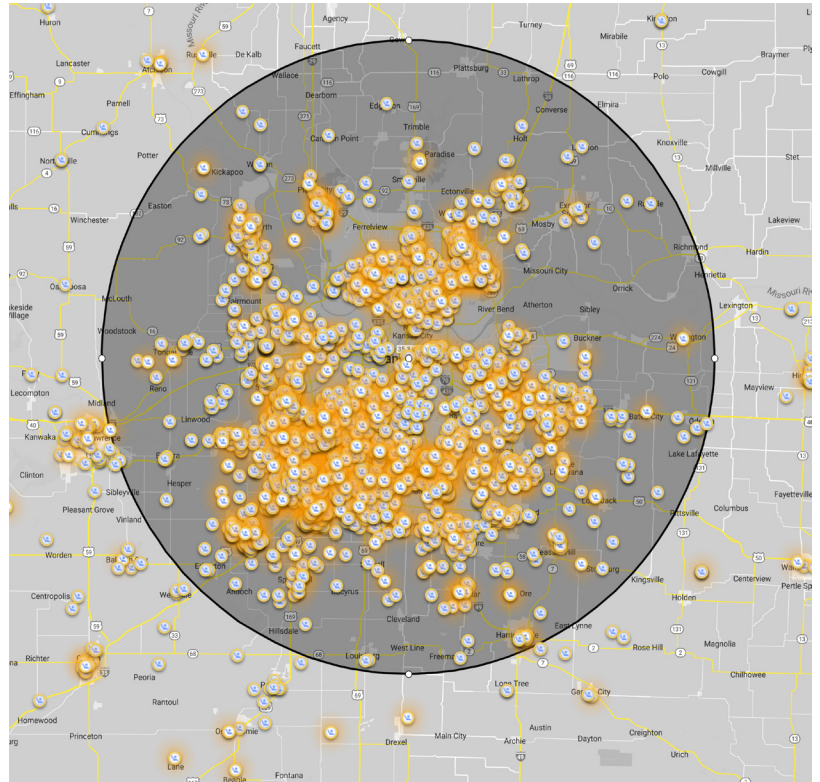
Start here: Commit to pray for the daily 5.



Prayer in the macro

How are we doing?

- There are 1.7M people in Kansas City within a 35 mile radius of downtown, KCMO.
- We have 3533 Lights who are adopting their neighborhood of 40 homes on ave. There are 13,281 neighborhoods in KC. 26% (gross) are adopted
- In KC there are 73,137 (net) homes adopted with 190,156 living in those homes. 11 % prayed for
- 131 of the 168 Zip Codes have a Light. 78%
- 308 of the 340 Grade School Districts have a Light.
- 91% (1404) of the 1432 CBGs have a Light 98%



Goal: Reach 4,000 Lights by the end of 2022

Karen and I caught the vision for Bless Every Home while we lived in Kansas City. I'm happy that Kansas City leads the nation in the number of Lights within a 35 mile radius. I'm thankful for Gary Kendall and Love KC catching the vision to see every home adopted and every person prayed for by name in Kansas City.

- Chris Cooper, founder, Bless Every Home

Start here: Recruit other believers you know to be Lights. Let's be a city of Lights.



Care in the micro

If you pray for neighbors, friends and relatives, you will have opportunities to care. God is at work all around you and you will sync with the Holy Spirit to join Him where He is already at work.

Andrew's Story

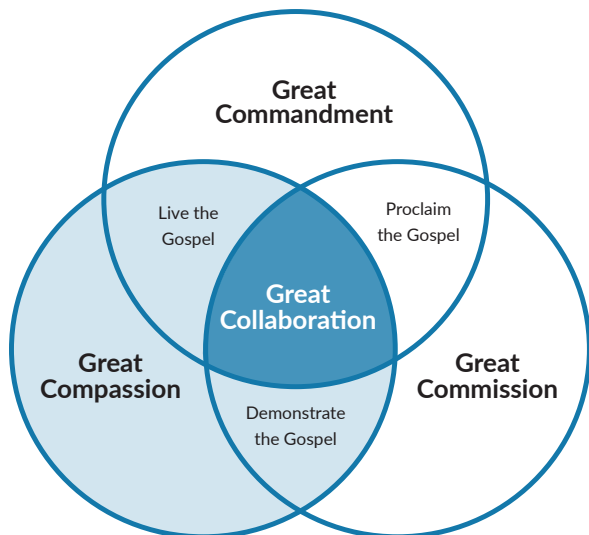
"My wife Tylena, along with our kids Zoe and Josiah moved into a new house in the city of Independence, Missouri after our move from Fort Lauderdale, Florida. On our first week of moving into the neighborhood, we learned that one of our neighbors is a stay-at-home mom. So, we purchased some pastries and coffee. Then took them over to this neighbor's house, spent some time exchanging stories and getting to know one another. We've continued to cultivate a relationship with this family.

Care is both spontaneous and strategic. Be mindful of the moments that open up for care in your daily activities. God gives serendipities; catch them. Simple kindness is rare today, make it your MO and they will see Jesus in you. "



Adudu family

The Four "Great's"



The Great Commission gives us the calling to go *make disciples* of every nation. It is the mission for every disciple. Matthew 28:18-20

The Great Commandments summarize the law and the prophets and tell us how to fulfill the mission--*love* God and *love* man. Matthew 22:37-39

The Great Compassion instructs us that *serving* the felt needs of others is the way to begin. The four "Great's" reveal that the gospel must go forward in the world in word and deed. Matthew 25:31-46

The Great Collaboration, where it all comes *together*. John 17:20-23

Start here: "Do one good thing." -Ray Jarrett, founder of Unite KC



Care in the macro

Fact: If each Light served even one hour a week, each week of the year, the economic impact of a city of Lights caring creates \$5.53M in volunteer hours served (3,553 Lights x \$29.95 x 52 weeks).

Love KC partners with mission orgs and churches across the city to maximize our impact. There is an economy of scale when we partner. Regularly we promote other ministry events and mobilize our audience to join in. An example is Caring for Kids.

Caring for Kids

You can join Caring for Kids in the partnerships between businesses, churches, and schools. They now serve 7 Districts and 96 schools fostering 378 Community Partner Organizations.

It starts with the right question to the principal, How can we help you achieve your goals? Since being founded in 2013 the answer yielded:

- ✓ 3,752 projects to support principals' goals
- ✓ 5,401 volunteers
- ✓ 41,883 students indirectly served during the past school year
- ✓ \$1,328,802 invested by partners (in-kind donations and cash contributions to schools)



Porsche Seals

Care in the macro looks like individuals, churches, and businesses combining efforts to surround our 340 local grade schools with prayer, love, and service.



Love KC mobilizes churches through the Gloo platform to respond to digital explorers. We call this digital care. Presently 51 churches in KC are set up to reach back when digital explorers reach out.

Digital explorers click “connect with a caring person” in a **He Gets Us** ad and are routed to a local church. In Kansas City over 2,100+ digital explorers had a caring person respond to text, talk, or pray. Love KC has responded to over 338+.

Here is a text response from a digital explorer who came through the Gloo app after being served by Love KC:

“Now I know his endless love for all of his creation, I am now trying to figure out the plans he has for me. I am asking him in prayer to reveal his plans for my life and I’m hoping to get an answer soon. Everyday is a growing experience with God and I can’t wait to fulfill his wishes.”

Start here: Amplify your impact by teaming up with a citywide partner to be the hands and feet of Jesus in your context.



Share in the micro

When you pray and care you will, no doubt, have opportunities to share. People will wonder or ask, why are you doing this?

In the same way, let your light shine before others, so that they may see your good works and give glory to your Father who is in heaven. -Matthew 5:16

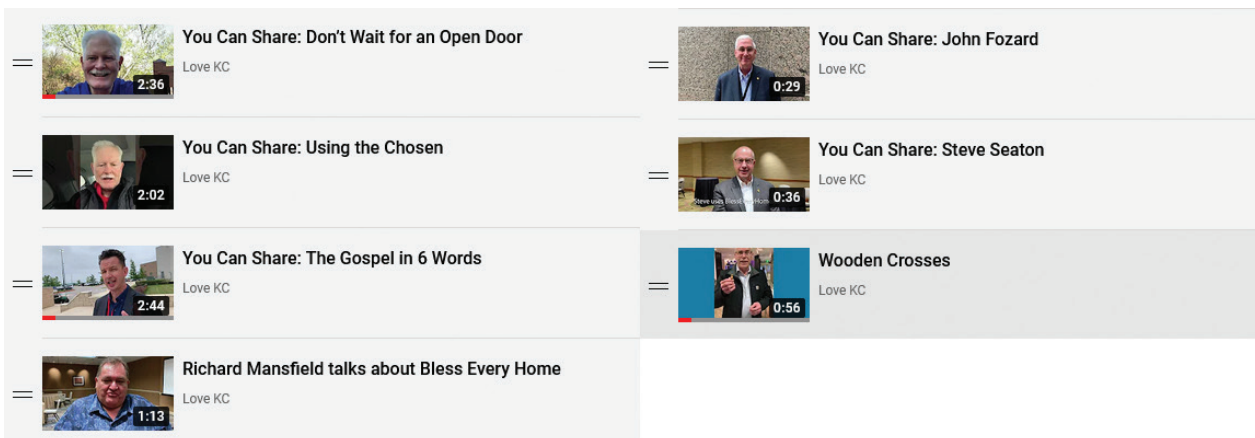


The BLESS Rhythms

When you have opportunities to share, remember to apply the BLESS rhythms.

You can Share and we can help

Check out our YouTube channel (<https://lovekc.net/youcanshare>) where Love KC Catalyst Gary Kendall and others share their actual stories of sharing their faith in 2 minute clips. You can add to our videos by sending yours to tim@lovekc.net.



Start here: Practice telling your story with a friend. Highlight your “before,” how you made a decision for Jesus and then your “after.”



Share in the macro

Jesus called his disciples to *follow Him* and He would make them *fishers of men*.

If we follow but don't fish for men are we a disciple or just a believer? You don't have to be the person who leads someone across the line of faith but you can be a part of their journey to faith.

Studies show that typically a person will have at least 10-15 encounters where they could choose Jesus before they do. You may be the person who benefits from what others shared or you may plant the seed so someone else reaps the harvest.

Invite a friend to join an **Alpha** group and do it together. Individual sharing is foundational to the Christian faith; sharing in community multiplies the effect.

"As culture continually changes in the U.S., the mission at Alpha remains the same: we exist to equip and serve the church in its mission to help people discover and develop a personal relationship



Jenna Gaeddert



with Jesus. We work to come alongside churches, offer support, and provide free, compelling, resources they need to present the gospel in their communities. Alpha Kansas/Missouri, based in Kansas City, has engaged with more than 215 churches and organizations this year, hosting more than 300 courses (in homes, churches, prisons, recovery homes, and for youth), which has impacted more than 8,000 people. Alpha continues growing as a result of empowering those who take part in the ministry. Empowering churches and their guests with an invitation to continue to host Alpha for their friends, leads to renewed congregations growing through a culture of openness and hospitality." -Jenna Gaeddert

The State of Evangelism in Kansas City

In order to inspire us to dream bigger and saturate our city with the Good News of Jesus, The **Luis Palau Association** commissioned the KC e-team to conduct 50 interviews with church leaders, business leaders, and mission leaders across the city. LPA will assist Love KC in going through the data to understand where we are strong and how to build on that, and where we are weak and how to strengthen our impact citywide.

Barna agreed to partner with us in KC so the result is both anecdotal evidence and actual data. The interview team is led by Andrew Adudu and supported by Jade Van Slyke, Jenna Gaeddert and Gary Kendall.

Start here: Explore joining an Alpha group where your church is the sponsor and/or starting one at your work or a "third place." – A familiar spot where you connect with others.



discipleship



Disciple in micro

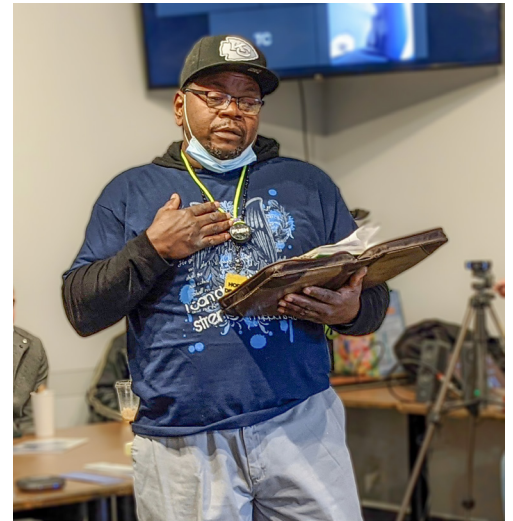
Love KC was born out of the desire to see disciples make disciples. -Gary Kendall, Catalyst, Love KC

Every disciple can point to someone who was “Jesus with skin on.” That person was usually a parent, friend, mentor, or hero who walked with you as you grew to be like the person of Jesus. Most of us have a series of people who helped disciple us.

Discipleship is more caught than taught

You may lead your friends, family, or co-worker to Jesus and if so you are the natural one to disciple them. You may also come alongside another believer at just the right time to help them take the next step.

*All over the world **Disciple Making Movements** are breaking out, where ordinary people are reproducing new disciples and simple forms of church. These stories of movement inspired us to launch **KC Underground**, a missions network in the city set up to help catalyze microchurches in neighborhoods and relational networks all throughout KC. Within these global Gospel Movements, a simple disciple-making strategy known as **Discovery Bible Study (DBS)** is almost always present. It's a light-weight, but deep-rooted strategy that focuses on inductive learning and immediate obedience, and can be reproduced by anyone in any setting. -Cory Ozburn*



James Mays

James Mays is a leader in the Share the Hope network connected with **KC Underground** who has been disciplined with a DBS approach. A few years ago he showed up to a microchurch gathering intoxicated, but also hungry for life change. He gave his life to the Lord in that gathering that utilizes DBS, and began to grow in knowledge and obedience to Jesus. Over time he began to facilitate his own groups, which were also full of addicts and ex-cons, utilizing the exact same disciple-making strategy. Now James helps lead multiple microchurch settings, as well as countless other discipleship relationships.

Start here: Every disciple is called to be a disciple-maker; who in your circle needs your intentional effort?

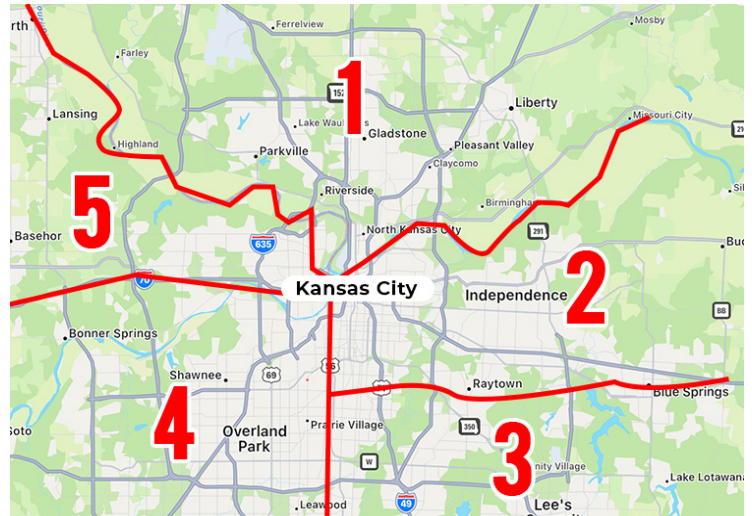


Disciple in the macro

We agree that God has a desire that every person in the city find a fulfilling life and an eternal life in Jesus. And if He has a desire, there must be a plan. **But until we have a plan it is only a wish and not a goal.**

To reach every person it requires every disciple living on mission.

Ekklesia - *the called out people of God living in community*, sometimes known as the big C, church.



The EVERY Person Plan is a step toward creating a decentralized, bottom-up, network that tracks toward every person hearing the Good News from a friend in Kansas City by meeting regularly, regionally, and annually at least once.

Why 5 Regions?

Kansas City is a diverse city with regions that are geographically and culturally different. The needs and opportunities vary in each part of the city.

Only Together

If our efforts are siloed we lack the bandwidth to reach a city. The only way we can move the needle toward our city flourishing is if we work together. We must be free to play to our individual strengths and to operate in our passions and at the same time pool our resources.

The Five Finish Lines

Collaboration requires commitment to a common cause. The Five Finish Lines of the Great Commission summarize much of what the big C church works to accomplish:

1. Prayer
2. Compassion and Justice
3. Evangelism/Discipleship
4. Bible engagement
5. Growth of Christian Communities (churches or micro churches)

Love KC works as a backbone organization to coordinate efforts of the big C Church. Specifically, we measure progress toward the five finish lines, keep a database, convene the regions with local leaders, steward a common calendar, create environments for collaboration in unity with other churches, ministries, not-for-profits, and individuals living on mission in the spheres of culture where God placed them.

Start here: Team up with others in your region because we are better together.



Kansas City may kansas city thrive

Seek the welfare of the city I have deported you to. Pray to the Lord on its behalf, for when it has prosperity, you will prosper. Jeremiah 29:7

What does it look like when the kingdom of heaven comes? It looks like heaven coming to earth and earth looking more like heaven.

When the big C Church works together, making progress in each of the five finish lines, we should see a tangible effect in Kansas City. The number of people who are apart from a relationship with Jesus will decrease and human thriving will increase.

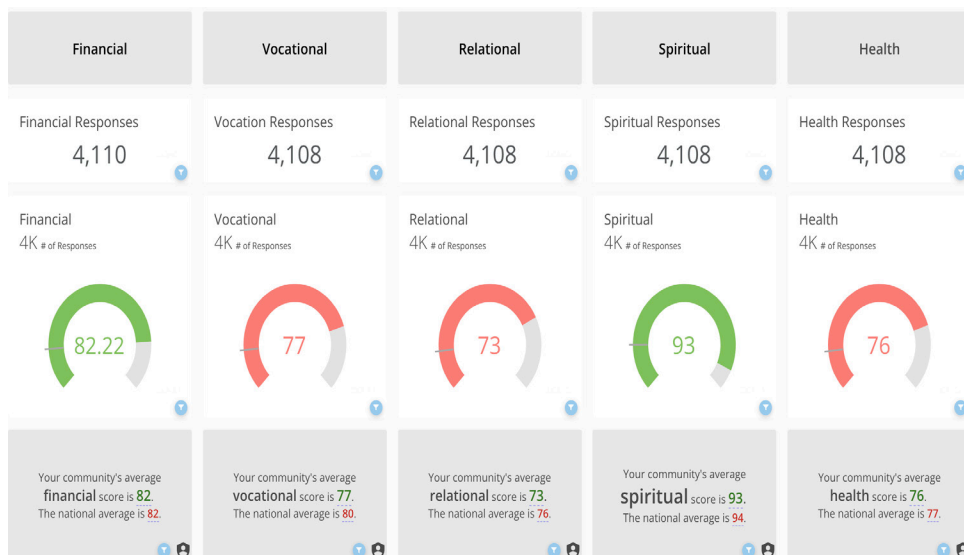
The Five Elements of Human Thriving

Barna's measurements on the topic of flourishing builds on Harvard University's Tyler J. VanderWeele's groundbreaking work. These are:

1. Relationships
2. Vocation
3. Finances
4. Well-being, mental and physical
5. Faith

Over time if the big C Church works effectively in Kansas City we should see the flourishing marks of our city grow. If the measurements show little or no growth it should inform the way we work together in KC.

The Five Circles





Kansas City - The City Beautiful

Do you like word pictures? Let me share a few.

Not long after Kansas City's founding a group of businessmen dreamed of a beautiful city with parks, boulevards, fountains, and prosperity. They called their vision, Kansas City, the city beautiful. Over time differences formed, some of them around racial concerns about what a beautiful city would look like.

A better question is, what is beautiful in God's sight? The scriptures are clear that God is most interested in equality and equity among all His children regardless of race, gender, age, or ethnicity. If we all work toward that every day, we will be a city beautiful.

Beauty in the sight of God looks like His love practiced in the way we live, conduct business, worship, and play.

A City of Shalom

The Bible gives us a word that speaks to the idea of human thriving; **Shalom**. The Hebrew word, shalom, has connotations of peace, harmony, wholeness, prosperity, and tranquility. If we were to pray for the shalom of Kansas City, we would be a city beautiful not just in the physical realm but more importantly in the spiritual realm.

If the big C church lives up to our calling as the Bride of Jesus and we live out the gospel in word and deed that would look like shalom in Kansas City.

I have a vision of Kansas City living up to the biblical definition of a city beautiful—a city of shalom.

Will you join in the effort to see EVERY Person prayed for by name? Would you agree that every person in Kansas City should have multiple opportunities to hear the Good News of Jesus from a friend?

Let's find a way together,

Gary Kendall

Start here: In The EVERY Person Plan everyone has a place. Find your calling and live out your passion in connection.



MEET LOVE KC

Love KC Team Leaders

Gary Kendall - Founder, Catalyst

Belinda Kendall - Donor Development, Women in Ministry Coach, Tall Oaks, and Love KC

Tim Stout - Creative, Project Planning

Andrew Adudu - Associate

Jade VanSlyke - Community Relations

Mark Martin - Secretary/Treasurer

Tracy Mosley - Accountant

Linda Meyers - Prayer Coordinator

Jane Flora Swick- Bless Every Home

Lyssa Kirwin - Social media

Deanna Hodson - Writer

Board of Trustees

Brent Coonrod - Chairman

Gary and Belinda Kendall

Tim Stout

Mark Martin

Jon DeWitt

Ben Stears

Eric Chia

Nichole Dinsmore

Other High Level Volunteers

Mike Jensen, Gary Ascanio, Margo Pruet



Meet Gary and Belinda Kendall

Gary Kendall, is the Catalyst for Love KC and his wife Belinda is an Associate at Love KC. Both Belinda and Gary are ordained pastors.

Gary and Belinda founded the Indian Creek Community Church in Olathe, Kansas, with a group of 27 adults in September of 1985 from a small home group Bible study. Indian Creek grew steadily adding many new ministries: Little Treasures Childcare Center, LifeLine Counseling Center, and Share the Blessings. Indian Creek Church was eventually reaching thousands in greater Kansas City and building a large ministry center to serve the church and the community. Gary managed budgets of \$3M+ for over ten years and oversaw \$27M

worth of facility construction while leading a staff of 20+ persons.

In 2004 Gary partnered with Robin Wood to start a ministry called the Church Multiplication Association, CMA. CMA assisted 72 church plants in the 8 years that followed before folding the network into Healthy Growing Churches.

Gary and his daughter, Kristen Kendall relaunched Project Partner, an international ministry to China in 2007. Kristen served as the Director. Gary's written three books: *The Path to Power* (a discipleship study) with Jim Davey, *Backwards*, (created to Live SENT) and *Love Your Neighbor* (a field guide for adopting your neighborhood).

In 2012 Gary accepted the request of Olathe Mayor, Michael Copeland, to found the Olathe Latino Coalition. In 2017 Gary received a special commendation from the Mayor and Olathe City Council for the successful start-up and long-term stability of the same. That year Gary was honored by the City of Olathe as Humanitarian of the Year. The Mayor even created a "Gary Kendall Day," July 17, in 2017 to honor the effort.

Gary, who already earned a Masters in Ministry from Mid-America Christian University, received an honorary Doctorate of Divinity from M.A.C.U. in 2017. In 2017 Gary completed the year-long leadership training course from GiANT Worldwide and serves in the role of Ambassador.

In 2017 Gary and Belinda transitioned from Indian Creek Community Church to serve in citywide ministry to the greater Kansas City metro area and beyond.

In 2018 Gary received the distinguished Charles Brisco Award for pastoral excellence in Kansas City given annually by PastorServe.

In 2019 Gary was hired by Gloop to serve as a Cities Representative in KC.

In 2021 Love KC received its not-for-profit status by the IRS.

Gary lives in Olathe, Kansas with his wife, Belinda.

What Does Your Giving Accomplish?

Love KC invested \$120,000 in our budget in 2022* to see 540 new Lights added (people living on mission) that resulted in 21,600 homes adopted and 64,800 persons covered in prayer.

*This number is the annual spend path Love KC is on after ten months.

The math says, for every \$.54 spent by Love KC, another person was adopted and prayed for by name in Kansas City.

We know other churches and ministries promote Blesseveryhome in Kansas City but something is happening here to make Kansas City the leading city with Lights that is unusually positive. Promoting prayer isn't the only thing we teach and equip for—care is step two in the pray, care, share, and disciple lifestyle.

The Economic Impact of Care, \$5.53M

If each Light served even one hour a week, the economic impact of a city of Lights caring creates \$5.53M in volunteer hours served (3,553 Lights x \$29.95 x 52 weeks).

How To Give

Donations are sent to:

Love KC
13505 S. Mur-len, Suite 105 #131
Olathe, KS, 66062

lovekc.net/donate
gary@lovekc.net

You can give by check by credit or debit card, stock, gifts in kind and Crypto.

Love KC is a 501.c.3

